



We Protect your product
Increase your storage
Improve your Labor Productivity
While enhancing Safety, Hygiene, & Ergonomics

HIGH VOLUME LOW SPEED (HVLS) FANS

LARGE CEILING FANS

LONG RANGE MOBILE FANS





WHY USE A HVLS OR MOBILE FAN

OSHA **OSHA:** Section III, Chapter 2, Subsection V of the OSHA Technical Manual, "*Recommendations for the Employer: Temp should be maintained "in the range of 68-76° F or (20-24 °C)"*" https://www.osha.gov/dts/osta/otm/otm_iii/otm_iii_2.html

The study shows that productivity drops by as much as four per cent per degree when temperatures rise above 27 degrees Celsius (80 degrees Fahrenheit) in workplaces requiring manual labour, the researchers looked at data from almost 70,000 plants across India.

HVLS VS NORMAL FANS

HVLS fans can help increase productivity by covering a large area with low energy consumption, low noise feature and high air volume.

HVLS Fans

- Increase productivity.
- Single fan covers large area.
- Low power consumption.

Normal Fans

- Less productivity.
- Need many fans to cover same area.
- High power consumption.

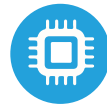
FEATURES



Super large air volume



Variable Frequency Drive
stepless speed control



High efficiency, Quiet



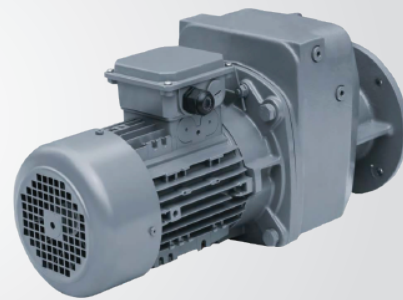
Permanent magnet

PERMANENT MAGNET MOTOR



VS

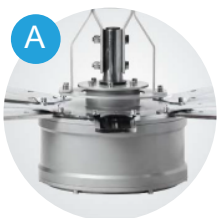
GEAR BOX VARIABLE MOTOR



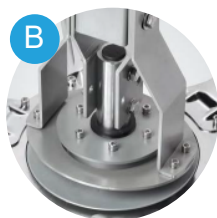
- A Energy efficient.
- B Small in size and light in weight.
- C Low noise.
- D Simple structure.
- E Frequency modulation width (0~50HZ).
- F Direct drive motor maintenance free.
- G No leakage.

- A Not energy efficient.
- B Large and heavy.
- C Loud noise.
- D Complex structure.
- E FM narrow (25~50HZ).
- F Maintenance required (Change seals, add gearbox oil).
- G Possible issue with leakage.

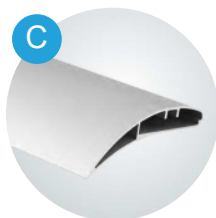
SAFETY



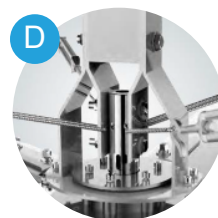
Motor bracket prevents any parts from falling off.



Anti-off-plate break-off protection ensures ceiling safety.



Aluminum magnesium alloy tensile blade for strength and toughness.



Wire rope traction device to ensure motor stability



Automatic power-off protection.

APPLICATIONS

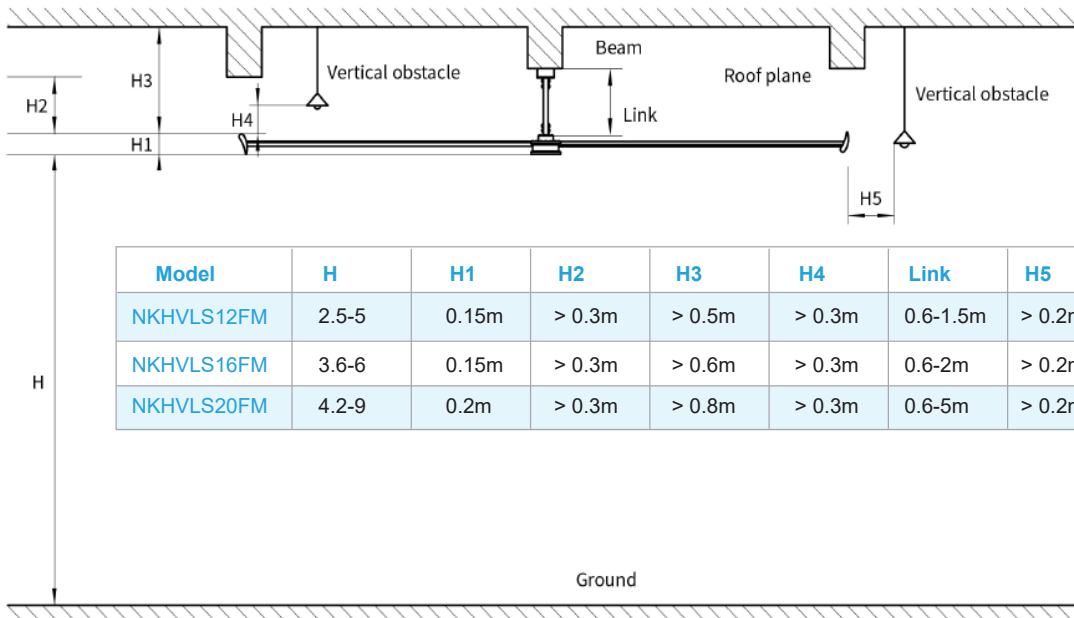


- Plant
- Warehouses
- Commercial - malls/schools/cafeteria/auditorium/movie theater/temples

TECHNICAL DETAILS

CEILING FAN'S					MOBILE FAN
Model	Unit	NKHVLS12FM	NKHVLS16FM	NKHVLS20FM	NK-HVLSF-8.8-SOP
Size	mm	4000	5000	6300	950W x 2600H x 2600W (mm)
No. of Blades	No.	5	5	6	6
Air Volume	CU-mm	7000	10000	11500	2280
Weight	Kgs	35	43	85	216
Voltage	V	220V/380V	220V/380V	220V/380V	220V/380V
Power	Kw	0.55	0.75	1.1	
Speed	Rpm	100	80	65	186
Noise	dBA	38	38	38	48
Effective Area	m ²	256	400	600	36 m
Area Covered	m ²	450	700	1000	36 m

INSTALLATION DATA



Model	H	H1	H2	H3	H4	Link	H5
NKHVLS12FM	2.5-5	0.15m	> 0.3m	> 0.5m	> 0.3m	0.6-1.5m	> 0.2m
NKHVLS16FM	3.6-6	0.15m	> 0.3m	> 0.6m	> 0.3m	0.6-2m	> 0.2m
NKHVLS20FM	4.2-9	0.2m	> 0.3m	> 0.8m	> 0.3m	0.6-5m	> 0.2m

Head Office:

Nilkamal Limited

Nilkamal House, Plot No.77 & 78, Street No.14,
M.I.D.C, Andheri (East), Mumbai - 400093

Toll Free Number: 1800 121 9115

Email: marketing@nilkamal.com

www.nilkamalmaterialhandling.com

